

MULTI MUNICIPAL PLANNING

INTRODUCTION

Multi-municipal or regional planning can be used for most traditional municipal plans and projects. By partnering with neighboring municipalities, townships and boroughs can share costs, plan across municipal boundaries and consider shared services. With many planning projects, like transportation and corridor studies, a regional approach may be the most effective way to ensure improvements are implemented.

Benefits

- Cost sharing
- Regional planning
- Shared services



APPLICABILITY

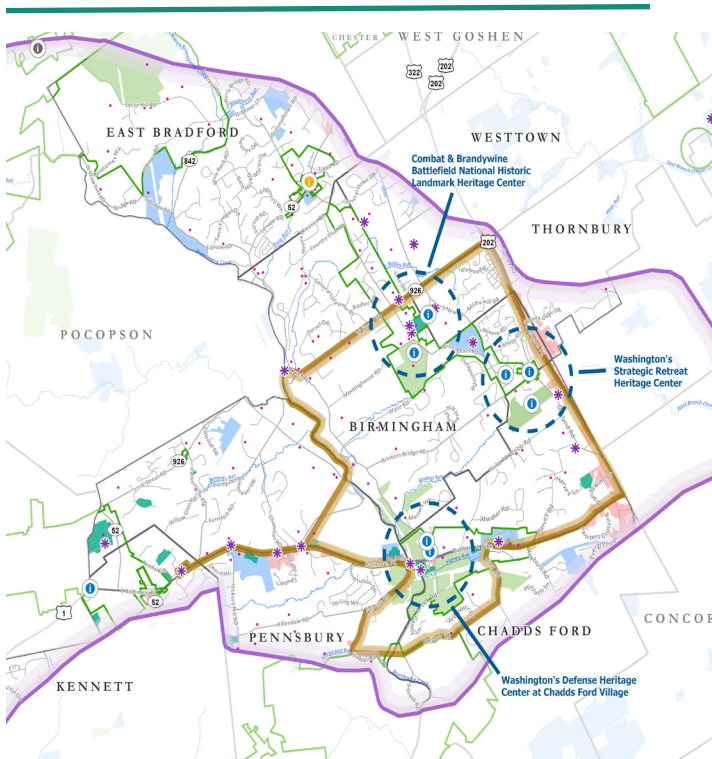
Multi Municipal Planning can be considered with many different planning tools.

- Comprehensive Plans
- Open Space, Environmental Resource and Recreation Plan
- Zoning Ordinances
- Transportation Plans and Corridor Studies
- Trail plans
- Heritage Interpretation Plans
- Infrastructure Planning

IMPLEMENTATION

Planning Process

- For any shared project or service, a Memorandum of Understanding between the participating municipalities may be necessary.
- Intergovernmental Cooperative Implementation Agreement: To develop, adopt, and implement a comprehensive plan involving multiple municipalities, the governing bodies of the municipalities can enter into intergovernmental cooperative agreements as outlined in 53 PA C.S. Ch. 23 and Article XI of the Municipalities Planning Code. These agreements can also involve multiple counties, municipalities, authorities, and service providers, with active participation from state agencies and school districts.



This map shows the extent of the Brandywine Battlefield Heritage Interpretation and Connectivity Plan.



BRANDYWINE
CONSERVANCY

SUCCESSFUL CASE STUDIES

Unionville Area Regional Comprehensive Plan (2024)

- This multi-municipal plan, completed by East Marlborough, West Marlborough, and Newlin Township, allowed the communities to pool resources and address regional priorities like open space preservation, responsible development, and community resiliency.

Brandywine Battlefield Heritage Interpretation and Connectivity Plan (2022)

- The plan focuses on interpreting the Battle of Brandywine across two counties and seven municipalities in Southeastern Pennsylvania. This inter-municipal plan identifies opportunities to highlight key places in the eastern portion of the Brandywine Battlefield area.

Honey Brook Township and Borough Comprehensive Plan (2015) and Zoning Ordinance Update (2017)

- This partnership between the Township and Borough promotes efficient sharing of services and amenities. Together they can manage regional growth, provide diverse housing and employment options, and ensure access to various amenities.
- The Borough and Township developed complementary zoning ordinances through a joint task force, resulting in an agreement for ordinance amendments, development reviews, and Transferable Development Rights (TDRs) from the Township to the Borough.

Route 896 Corridor Plan (2006)

- This plan was developed after the forming of the Route 896 Task Force, which enabled municipalities in Chester County along this corridor to discuss issues and coordinate efforts to meet the needs of highway users.

1 Hoffman's Mill Road
P.O. Box 141
Chadds Ford, PA 19317

610.388.2700
conservancy@brandywine.org
www.brandywine.org/conservancy