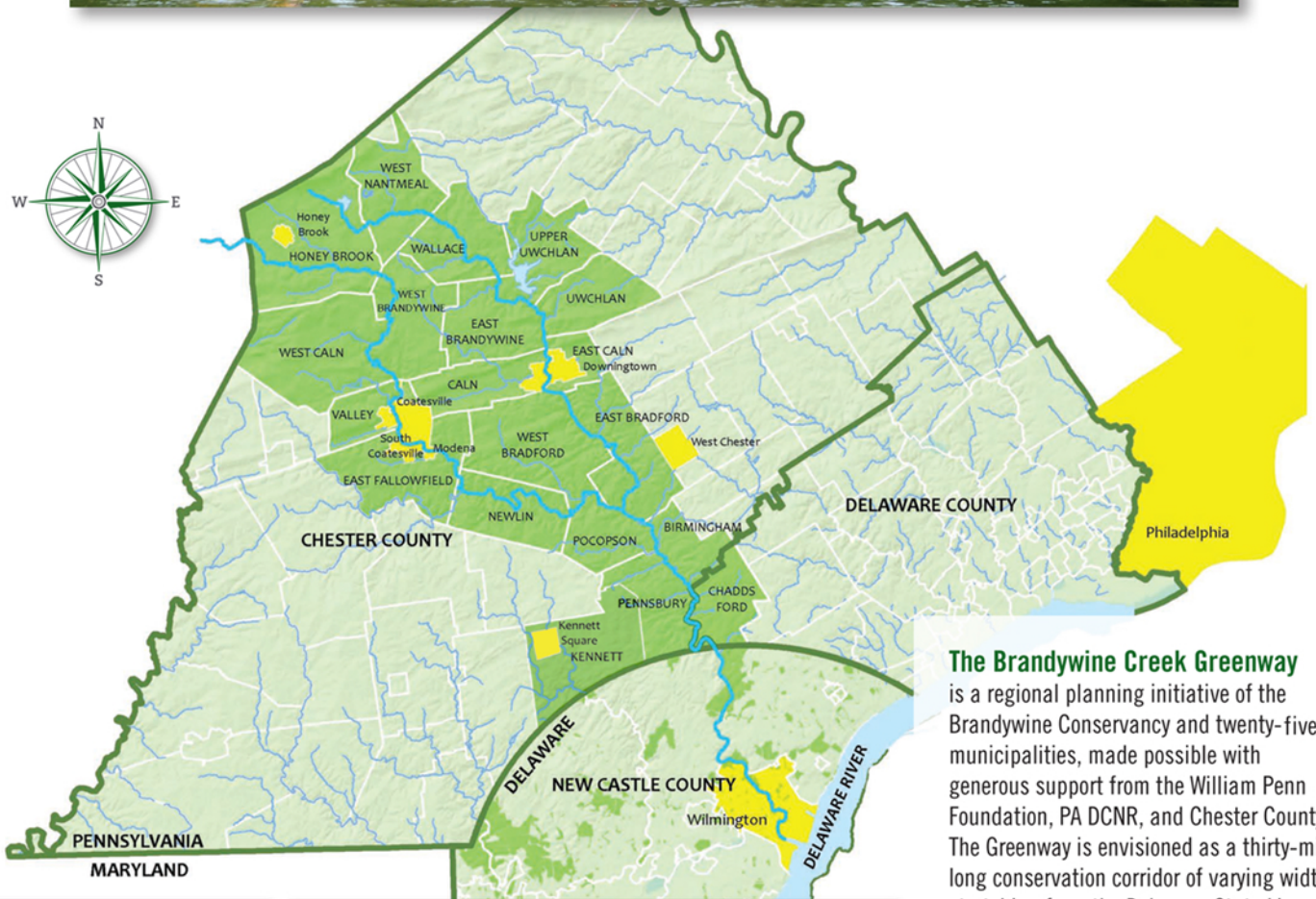
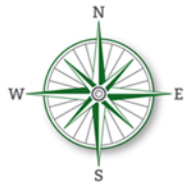


The Brandywine Creek Greenway



The Brandywine Creek Greenway is a regional planning initiative of the Brandywine Conservancy and twenty-five municipalities, made possible with generous support from the William Penn Foundation, PA DCNR, and Chester County. The Greenway is envisioned as a thirty-mile long conservation corridor of varying width, stretching from the Delaware State Line, at Chadds Ford, to the State-designated Pennsylvania Highlands Mega-Greenway, near Honey Brook. It will connect open space, parks, river access points, and area attractions and will link the Brandywine Creek with Chester and Delaware County municipalities along its path. The Greenway designation will not affect private property rights, but rather is intended to: emphasize the natural and cultural resources of the Brandywine Creek corridor; provide ideas and encouragement to municipalities and private land owners dedicated to conserving and restoring the Brandywine watershed; and build healthier, more sustainable communities.

